

Project partners



envision

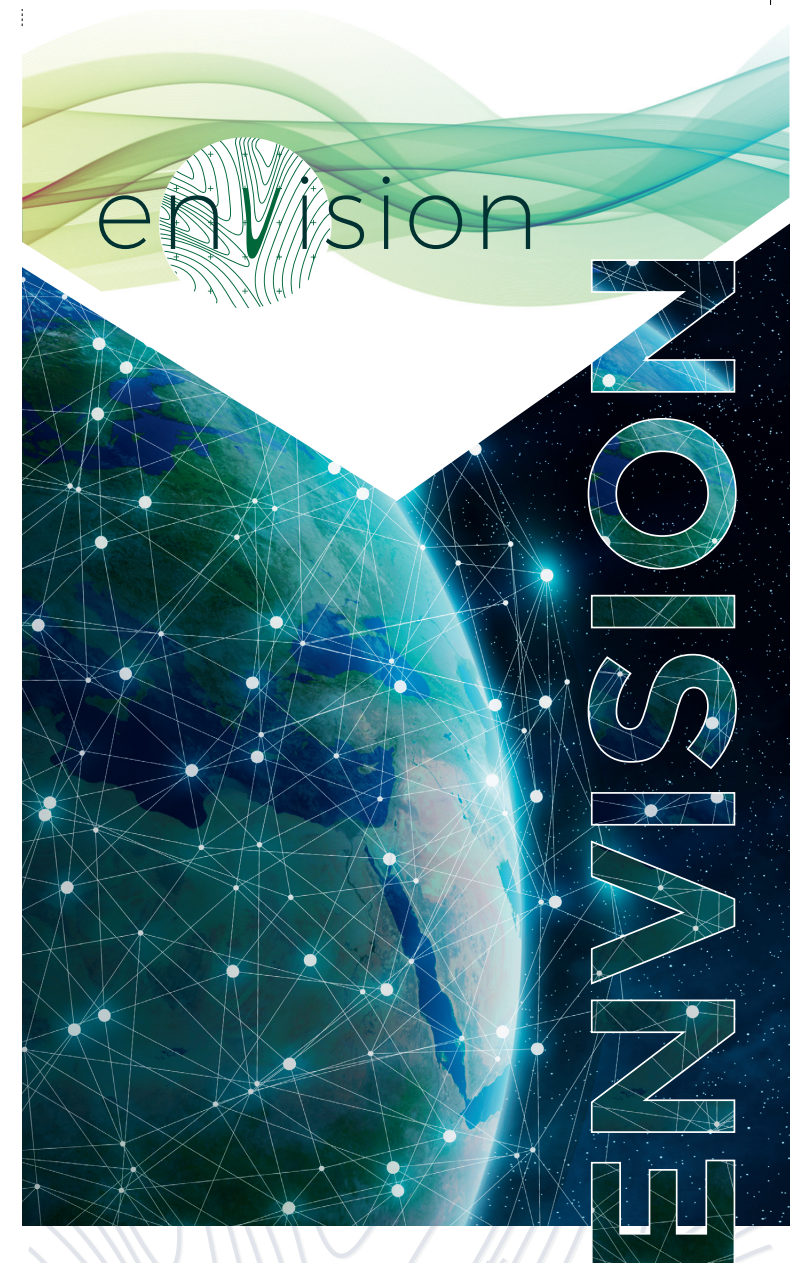
<https://envision-h2020.eu/>

<https://www.linkedin.com/company/envision-h2020/>

<https://twitter.com/EnvisionH2020>

<https://www.facebook.com/EnvisionH2020>

<https://www.youtube.com/channel/UC7a4V9GgwQhPANecnnqmsxQ>



ENVISION

Monitoring of Environmental Practices
for Sustainable Agriculture Supported
by Earth Observation



This project has received funding from the European Union's Horizon 2020 research and innovation programme under grant agreement No. 869366.

The brochure is prepared within the project "Monitoring of Environmental Practices for Sustainable Agriculture Supported by Earth Observation", acronym ENVISION. The ENVISION project and its content reflect the author's view; therefore, the EASME is not responsible for any use that may be made of the information it contains.

The tool

Monitoring

Powered by remote sensing imagery and machine learning techniques, ENVISION enables territory-wide and all-year-round monitoring of farmers compliance to CAP standards.

Inspection

Tailored satellite-based information services to perform remote assessment and get an accurate risk-based analysis optimal selection of farms' inspection and fraud detection.

Archiving

Confidently empower your operational and administrative processes with access to the latest historical data.

Communication

Improved communication channel between public authorities and farmers increasing the transparency of the declaration procedure and avoiding possibly penalties to farmers.

Your challenges

- › Monitor a territory-wide area
- › Verify a large number of farmers' declarations
- › Planning on spot activities
- › Reduce operational costs

ENVISION Services

ENVISION services enables Paying Agencies and Certification Bodies to have timely cost-efficient and actionable insights for the compliance monitoring procedure of the Common Agricultural Policy (CAP) agri-environmental standards.

Your Gains

Evaluate Risk

- › Continuously monitor declared parcels data
- › Perform farm inspections based on a smart sampling alert mechanism
- › Shift the focus from fragmented monitoring to specific fields and dates to territory-wide and all-year-round monitoring

Increase Efficiency

- › Improve declaration phase processing
- › Enable targeted on spot visits
- › Efficient operational planning
- › Evaluate faster, save time
- › Reliable results derived from the use of heterogeneous types of available data and state-of-the-art techniques

Reduce Costs

- › Ensure only valid declarations are paid
- › Prevent fraud by verifying the declared information
- › Reduce operational and administrative costs

Increase Transparency

- › Enable a common knowledge of the truth among farmers and paying agencies
- › Enable the timely feedback / corrections to the declarations

